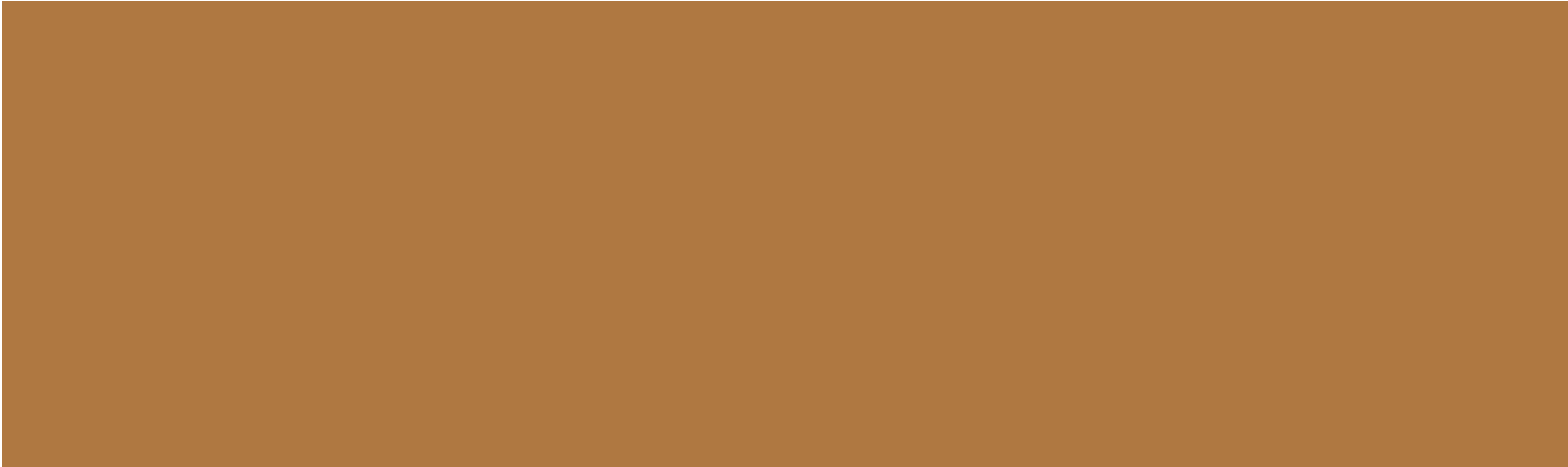


AVADH  
carolina   
luxury within reach



**DUMAS :**  
**The city of the future.**

The future is here. And its name is Dumas. A city taking shape today,  
for the citizens of tomorrow.

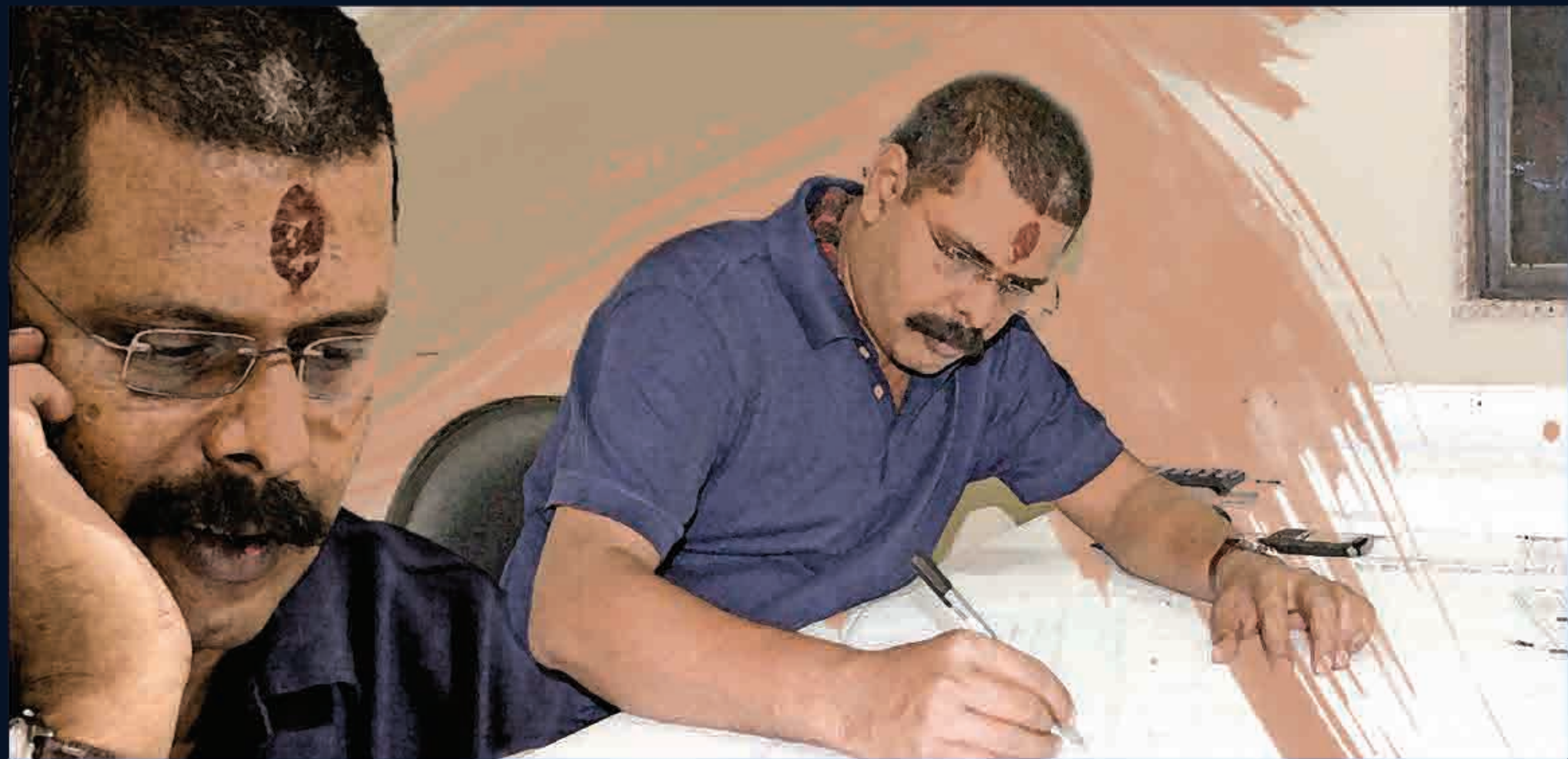
a prestigious venture from 



## Domestic Airport/BRTS/Outer Ringroad Conectivity down the road.

From sea and meadows, it's easy to take to the skies – Athwagate is less than 5 kms. away from Dumas Domestic airport. Giving you an easy access to BRTS route & you can easily connect to outer ringroad.





## Designed by God. Planned by Man.

A city that combines man's finest design and engineering skills with nature's matchless beauty, showcasing the best of both. A bird's eye-view of Dumas delights you with its natural beauty, abounding with trees, lakes, lily ponds & living here, unfolds the perfection of its planning. Every requirement of contemporary living has been thought of and provided for, in a way that blends seamlessly with the natural landscape.





Carolina welcomes people into a vibrant, lively space, with elegant entrance, the sheltering trees and woods that make Carolina a perfect haven.




WATER CASCADE / JOGGING TRACK



WATER DECK / SITTING AREA







Open spaces, shaped into sports grounds. Ensuring your kids get the childhood you've always earned to give them the joy of running free in open spaces, healthy outdoor sports, and all of nature's beauty to revel in. While you can let your hair down in an energetic game of tennis, as you please.





SITTING AREA / VOLLEY BALL COURT



Expansive and elegant, the Carolina clubhouse plays host to every leisure pursuit you could think of - a top-flight gym, a full-size swimming pool, an indoor games room for table tennis, carrom and snooker, a mini-theatre, a well-stocked library and a tranquil yoga centre.



The kids clamouring for a picnic? Bring them to the water deck front, where delightful picnic spots and nature trails have been created just for the purpose.



AVADH- Carolina Clubhouse



### Environment-Sensitive Planning

For sheer luxury surrounded by nature's bounty, for a life more beautiful than you could have imagined, there's no better place to come home other than AVADH-Carolina.

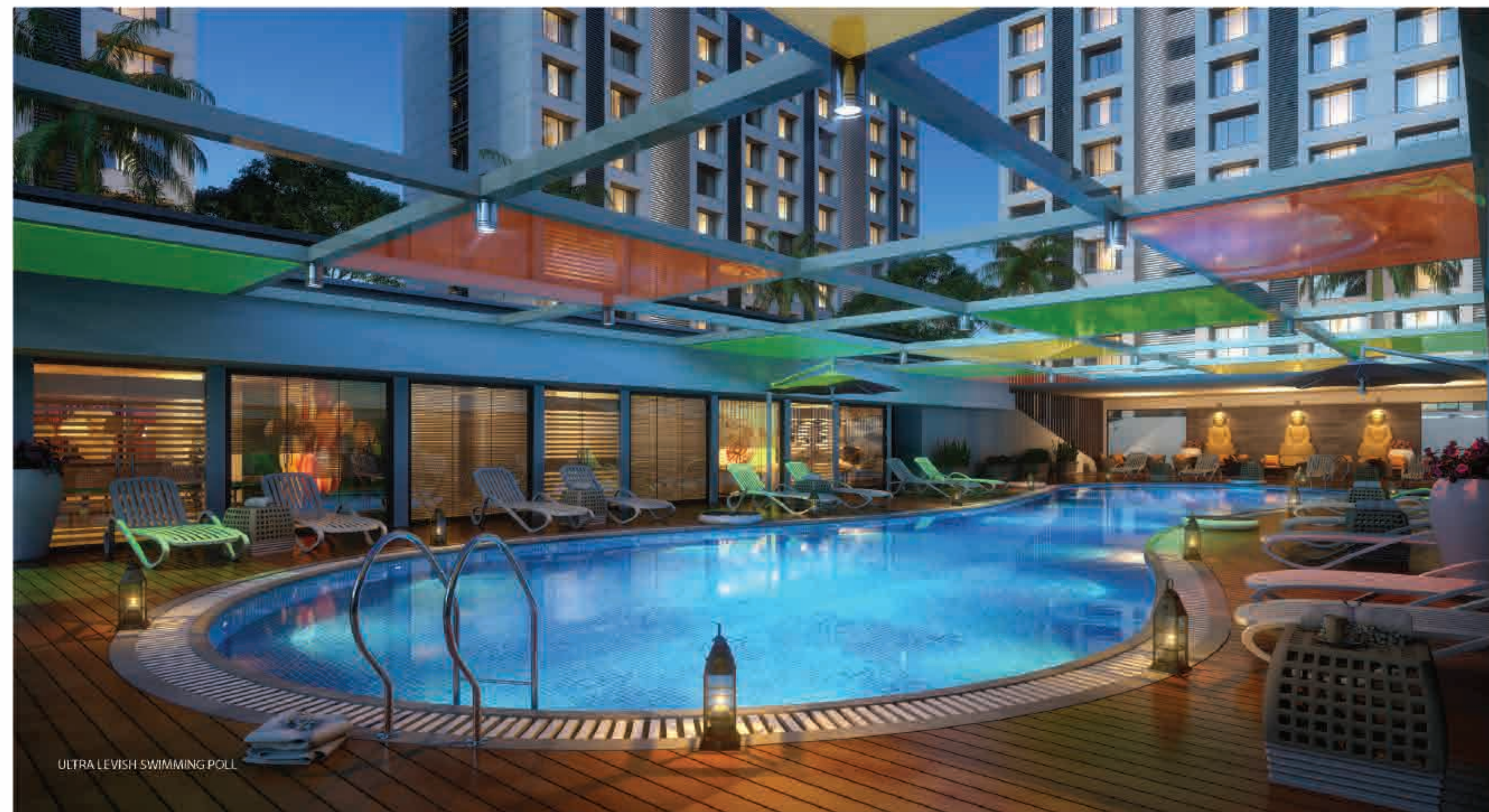


SEND-PIT / SENIOR CITIZEN SETTING AREA

## A Children's Playground & Picnic Area

Each cluster has a small but well-equipped children's play area, a corner for tiny tots and a separate picnic area for fun family times.





## Open-air Café

A stylish open-air café, also at your disposal, allows you to savour a beautiful life over a steaming cappuccino.



Carolina has been designed to showcase its own swimming pool to its best possible advantage.



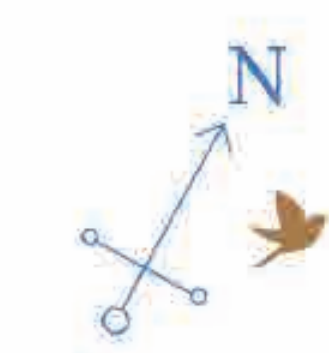




## Landscaped to perfection

The area around the waterbody has been landscaped with ingenuity and passion, offering you shaded gardens and charming pavilions as well as delightfully meandering pathways, from which you can contemplate the rippling waters..

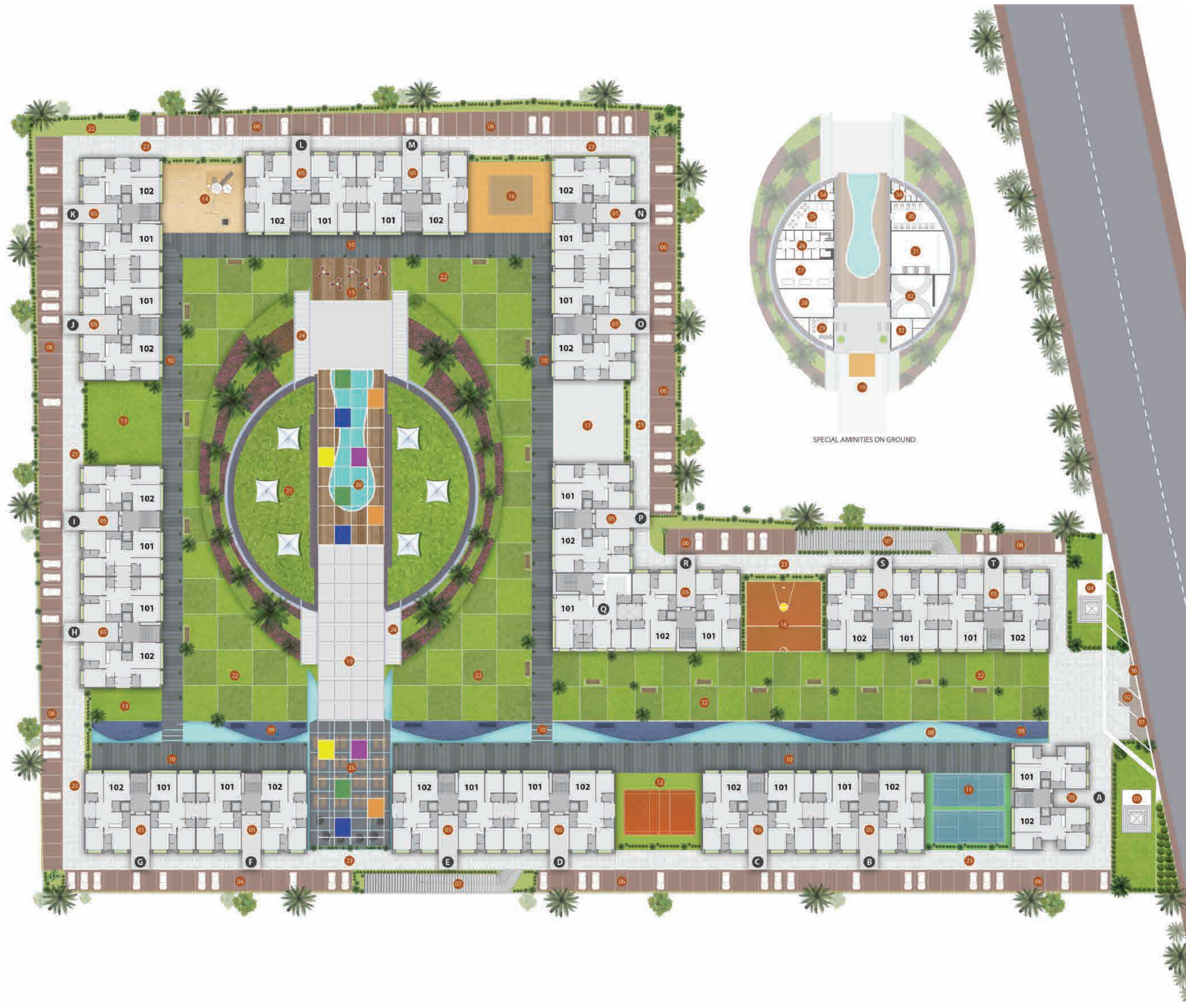


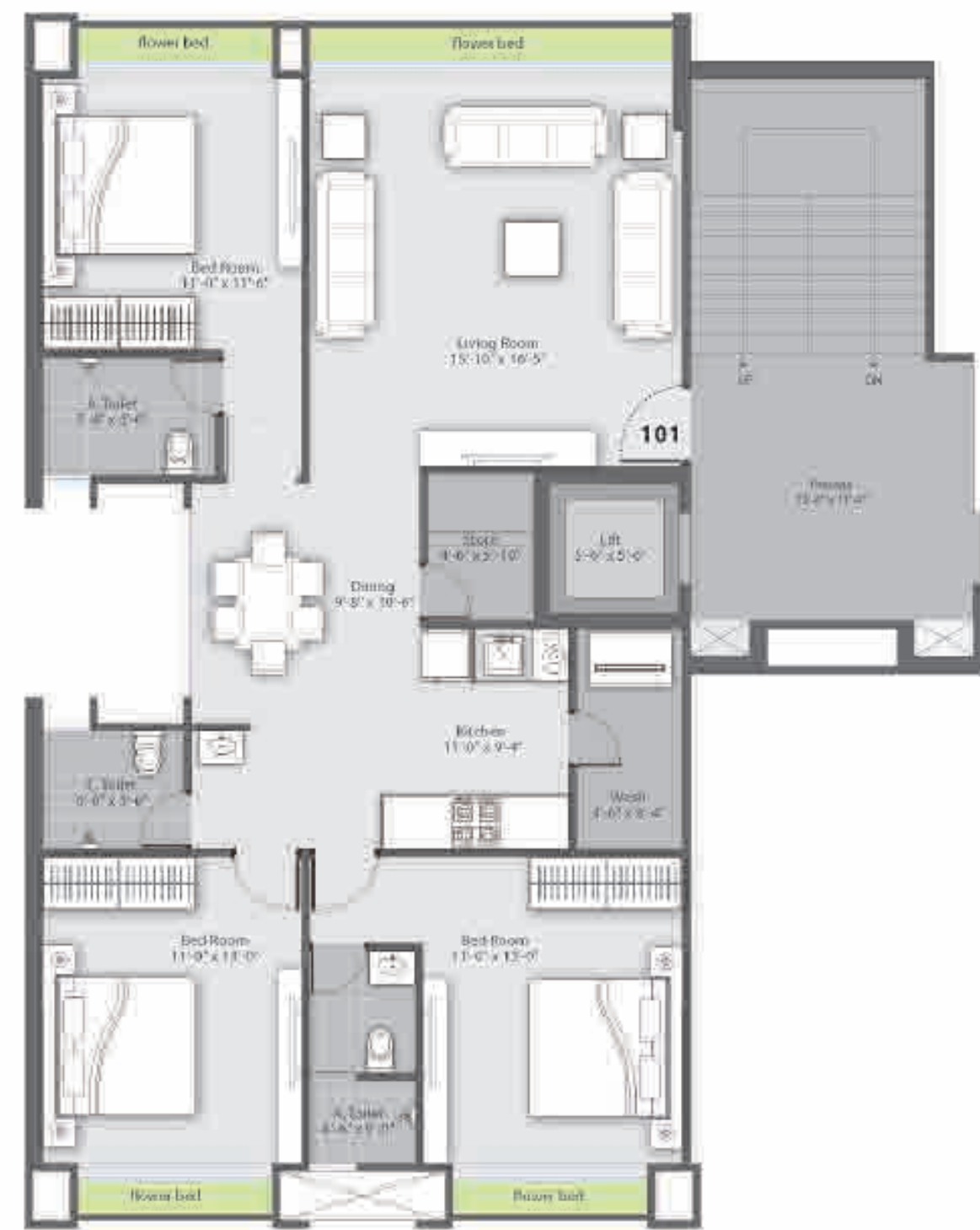


MASTER LAYOUT PLAN

LEGEND

- |                              |                           |
|------------------------------|---------------------------|
| 01) ENTRY                    | 19) CLUBHOUSE ENTRY       |
| 02) SECURITY CABIN           | 20) SWIMMING POOL         |
| 03) JAIN TEMPLE              | 21) HILL GARDEN           |
| 04) RADHA KIRSHNA TEMPLE     | 22) GARDEN                |
| 05) FOYER                    | 23) CAMPUS ROAD           |
| 06) EMPLP PARKING            | 24) HILL GARDEN STAIRCASE |
| 07) BASEMENT FOYER           | 25) CARD ROOM             |
| 08) WATER BODY               | 26) SPA                   |
| 09) WATER DECK               | 27) INDOOR GAME           |
| 10) WAKING TRACK             | 28) VIDEO GAME            |
| 11) BADMINTON COURT          | 29) OFFICE                |
| 12) VOLLEYBALL COURT         | 30) GYM                   |
| 13) OPEN AIR GYM             | 31) THEATER               |
| 14) KIDS PLAY AREA           | 32) DISCOTHEQUE           |
| 15) CLUB HOUSE DECK          | 33) LIBREARY              |
| 16) SKATING RINK             | 34) WASHROOM              |
| 17) BANQUET HALL IN BASEMENT | 35) MEDITATION AREA       |
| 18) BASKET BALL COURT        | 36) EXIT                  |





[1st - 11th] **TYPICAL FLOOR PLAN BLOCK - A**



**TYPICAL FLOOR PLAN BLOCK - "B to P" & "R to T"** [1st - 12th]





[1st-12th]

TYPICAL FLOOR PLAN  
BLOCK - Q





Comfort and  
Luxury of Modern  
Urban Living

## Specification

### POWER SUPPLY

Three Phase power supply from main LT line.

### GENERATOR BACK-UP (POWER BACK-UP)

All Common Activity plus 2 points per flat.

### ELEVATORS CONFIGURATION

2 No. Auto door lift of KONE /OTIS /SCHINDLER or eq. brand.

### SUPPLY OF WATER SOURCE

Municipal Water supply U.G.W.T. Capcity  
50,000 lts. / O.H.W.T. 25,000 lts. / bldg.

### SECURITY SYSTEM

C.C.T.V. Camera +Intercom Facility at foyer.

### SEWAGE SYSTEM

External Underground Drainage  
connected with Municipal Drainage line.

## Internal Unit Finishes

### FLOORING

Branded Vitrified granamite flooring in all rooms.

### KITCHEN

Granite Platform with S.S. Sink of Carysil or eq. make.

### DOORS

Wooden / Granite frame with standard flush door.

### ELECTRIFICATION

Sufficient Concealed Electrification points with Havels /  
Finolex / Polycab make wires & Modular Switch of I.S.I. brand.

### WINDOWS

Aluminum Anodized section window.

### PLUMBING

Concealed Plumbing with Jaquar / Grohe / Kohler or eq.  
make Sanitaryware & C.P. fittings.

### WALL FINISH

Putti finish internal wallls.

### TOILETS

Matt finish Vitrified tile up to lintel lvl.

## Internal Common Area Finishes

### LIFT CLADDING

Granite / Vitrified tile Cladding.

### STAIRCASE

Ground to 1st Granite & Rest floor with Kotah stone in Staircase.

### PASSAGE

Granite & Vitrified tile in flooring design with lift cladding.

### FOYER

Italian Marble Flooring & Cladding with  
modern concept furniture in foyer.

## External Finishes

### PLASTER / TEXTURE

Texture on Double Coat Mala finish Plaster.

### COLOUR

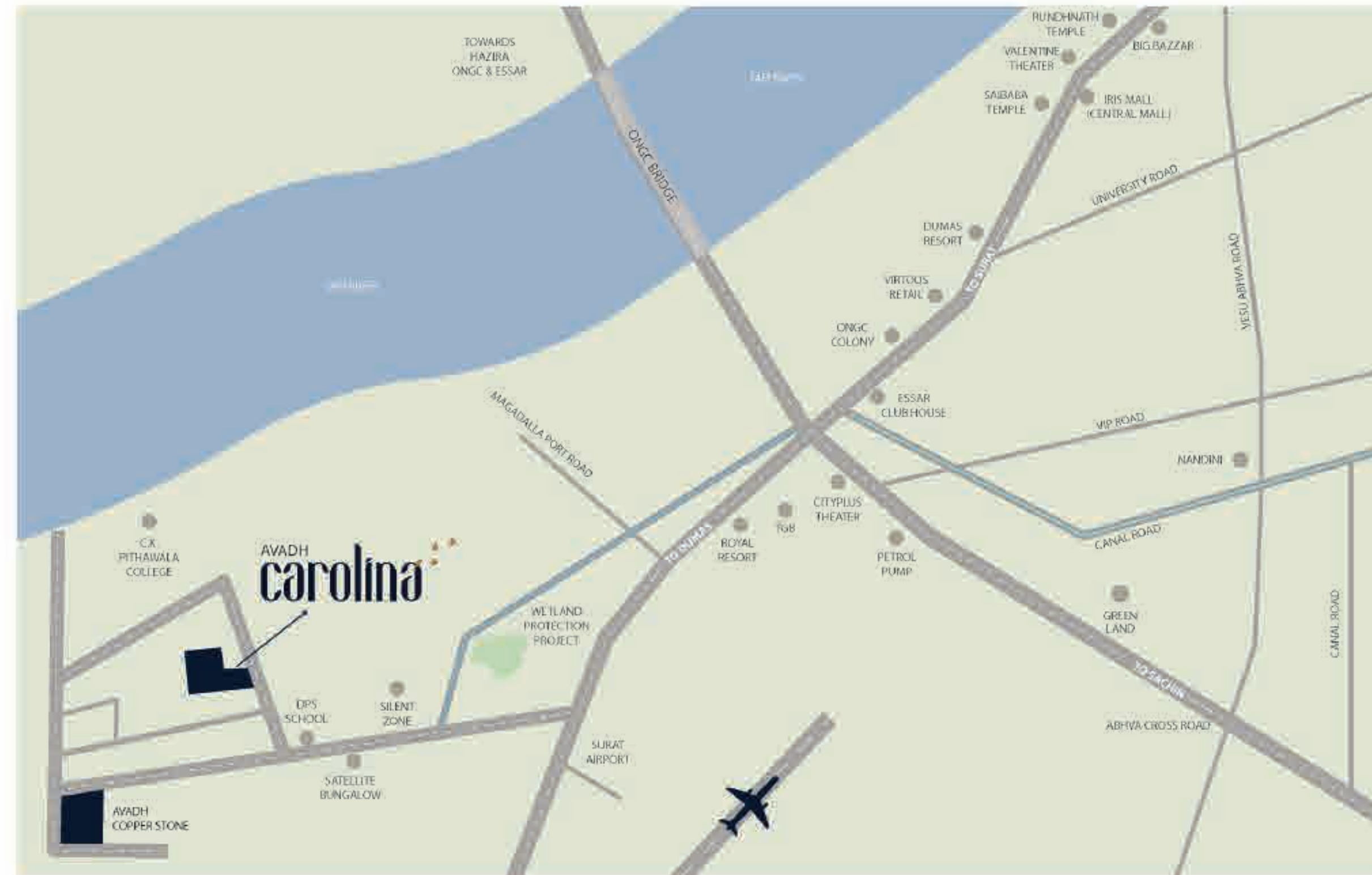
I.C.I. Whether Shield Max / Asian paint Or equivalent make  
acrylic paint.

### TERRACE

Water proof with China Mosaic.



## Location Map



a prestigious venture from 

**SITE ADDRESS - AVADH CAROLINA**  
F.P. 103, T.P. 82 (Dumas), Near DPS school,  
off Surat-Dumas Road, Surat

**CALL US ON**  
098791 78000, 098792 78000.  
[www.avadhprojects.com](http://www.avadhprojects.com)

**DEVELOPERS**  
AVADH BUILDCON

**ARCHITECT**  
BLACK INK  
SANJAY JOSHI & ASSOCIATES

**LANDSCAPE**  
WHITE GRASS  
SANJAY JOSHI & ASSOCIATES

**STRUCTURE & ENGINEER**  
SAI CONSULTANT  
HIREN DESAI

**INTERIOR**  
MEGA INTERIOR  
HEMALI MEHTA

Disclaimer : 1) Stamp Duty , Registration Charges, Legal charges, GEI & SMC Charges & rates, Society maintenance Charges & Safety grills expense etc. shall be borne by the purchaser. VAT, SERVICE TAX etc. Will borne by the purchaser. 2) Any additional charges or duties levied by the government / local authorities during or after the completion of the scheme like SMC tax, betterment charges will be borne by the purchaser. 3) In the interest of continual developments in design & quality of construction, the developer reserve all rights to make any changes in the scheme including technical specification, design planning, Layout & all purchasers shall abide by such changes. 4) Internal changes shall be permitted after and shall be charged extra and to be paid in advance. 5) Uniform designed of windows GEI extra expense to be born by owner. 6) Any type of External changes strictly NOT ALLOWED during or after the completion of the scheme. Internal changes will be done only with prior approval & will be charged extra with total responsibility of the purchaser. 7) This brochure is intended only for easy display & information of the scheme & does not form part of the legal document.

